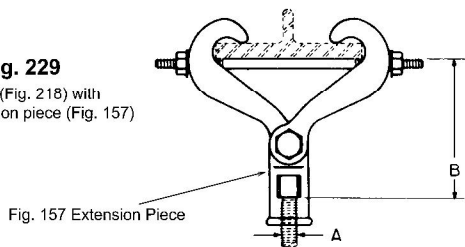


## FIG. 229 MALLEABLE BEAM CLAMP WITH EXTENSION PIECE

**Fig. 229**  
Clamp (Fig. 218) with  
Extension piece (Fig. 157)



- Material:** Malleable iron.
- Finish:** Plain or electro-galvanized.
- Service:** Designed for the suspension of a hanger rod from the center of an I-beam. The clamp accommodates flange widths of  $2\frac{3}{8}$ " to 7". Flange thickness not to exceed .60 inches. Extension piece provides 1" of vertical adjustment.
- Approvals:** Complies with Federal Specification WW-H-171-E (Type# 30), A-A-1192 A (Type# 30) and Manufacturers' Standardization Society MSS SP-58 and SP-69 (Type# 30).
- Ordering:** Specify rod size, figure number and finish.

SIZE A	B ROD TAKE-OUT FOR WIDTH OF BEAM FLANGE						BOLT DIA	WGT EACH (lbs)	MAX REC LOAD (lbs)
	$2\frac{3}{8}$	3	4	5	6	7			
$\frac{3}{8}$ -16	$4\frac{3}{4}$	$4\frac{11}{16}$	$4\frac{9}{16}$	$4\frac{3}{16}$	$3\frac{13}{16}$	$3\frac{1}{8}$	$\frac{7}{16}$	2.42	610
$\frac{1}{2}$ -13	$4\frac{7}{8}$	$4\frac{13}{16}$	$4\frac{11}{16}$	$4\frac{5}{16}$	$3\frac{15}{16}$	$3\frac{1}{4}$	$\frac{7}{16}$	2.63	1130
$\frac{5}{8}$ -11	$4\frac{15}{16}$	$4\frac{7}{8}$	$4\frac{3}{4}$	$4\frac{3}{8}$	4	$3\frac{5}{16}$	$\frac{7}{16}$	2.67	1365
$\frac{3}{4}$ -10	$5\frac{3}{16}$	$5\frac{1}{8}$	5	$4\frac{5}{8}$	$4\frac{1}{4}$	$3\frac{9}{16}$	$\frac{7}{16}$	2.87	1365
$\frac{7}{8}$ -9	$5\frac{1}{4}$	$5\frac{3}{16}$	$5\frac{1}{16}$	$4\frac{11}{16}$	$4\frac{5}{16}$	$3\frac{5}{8}$	$\frac{7}{16}$	3.01	1365