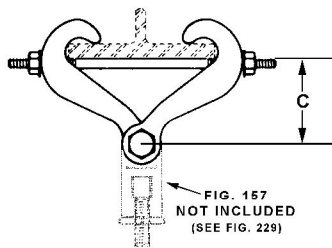


FIG. 218 MALLEABLE IRON CENTER LOAD BEAM CLAMP



- Material:** Malleable iron.
- Finish:** Plain or electro-galvanized.
- Service:** Designed for the suspension of a hanger rod from the center of an I-beam. The clamp accommodates flange widths of $2\frac{3}{8}$ " - 7". Flange thickness not to exceed .60 inches. Normally used in conjunction with figure 157 extension piece. Figure 157 provides 1" of vertical adjustment.
- Approvals:** When used with FIG. 157 Extension Piece, complies with Federal Specification WW-H-171-E (Type# 30), A-A-1192 A (Type# 30) and Manufacturers' Standardization Society MSS SP-58 and SP-69 (Type# 30).
- Ordering:** Specify figure number and finish.
- Notes:** For complete assembly with extension piece see FIG. 229.

A ($\frac{7}{8}$ MAX ROD)	C ROD TAKE OUT FOR WIDTH OF BEAM FLANGE						BOLT DIA	WGT EACH (lbs)	MAX REC LOAD (lbs)
	$2\frac{3}{8}$	3	4	5	6	7			
CLAMP ONLY	$3\frac{1}{2}$	$3\frac{7}{16}$	$3\frac{5}{16}$	$2\frac{15}{16}$	$2\frac{9}{16}$	$1\frac{7}{8}$	$\frac{7}{16}$	2.49	1365