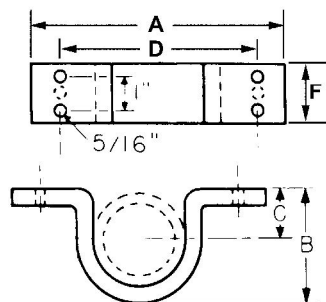


**FIG. 180**  
**SHORT CLIP**



- Material:** Carbon steel.
- Finish:** Plain or electro-galvanized.
- Service:** Designed to support pipe close to ceiling or wall.
- Ordering:** Specify size, figure number and finish.
- Notes:** Available in stainless steel and hot-dip galvanized. Sizes 1/2" to 2" are furnished with two screw holes. Sizes 2 1/2" to 4" are furnished with four screw holes.
- \* Radius edge 1/2" to 2" with 2 holes.
  - \* Square edge 2 1/2" to 4" with four holes.

PIPE SIZE	PIPE OD	MATERIAL	A	B	C	D	F	WGT EACH (lbs)	MAX REC LOAD (lbs)
1/2	0.840	11ga	3 <sup>3</sup> / <sub>16</sub>	1 <sup>1</sup> / <sub>8</sub>	9 <sup>1</sup> / <sub>16</sub>	2 <sup>1</sup> / <sub>16</sub>	1 <sup>1</sup> / <sub>4</sub>	0.165	300
3/4	1.050	11ga	3 <sup>1</sup> / <sub>2</sub>	1 <sup>3</sup> / <sub>8</sub>	5 <sup>5</sup> / <sub>8</sub>	2 <sup>3</sup> / <sub>8</sub>	1 <sup>1</sup> / <sub>4</sub>	0.190	300
1	1.315	11ga	4	1 <sup>5</sup> / <sub>8</sub>	3 <sup>3</sup> / <sub>4</sub>	2 <sup>7</sup> / <sub>8</sub>	1 <sup>1</sup> / <sub>4</sub>	0.235	300
1 1/4	1.660	11ga	4 <sup>7</sup> / <sub>16</sub>	1 <sup>7</sup> / <sub>8</sub>	1 <sup>5</sup> / <sub>16</sub>	3 <sup>5</sup> / <sub>16</sub>	1 <sup>1</sup> / <sub>4</sub>	0.260	300
1 1/2	1.900	8ga	4 <sup>13</sup> / <sub>16</sub>	2 <sup>3</sup> / <sub>16</sub>	1 <sup>1</sup> / <sub>8</sub>	3 <sup>11</sup> / <sub>16</sub>	1 <sup>1</sup> / <sub>4</sub>	0.400	300
2	2.375	8ga	5 <sup>1</sup> / <sub>2</sub>	2 <sup>3</sup> / <sub>4</sub>	1 <sup>3</sup> / <sub>8</sub>	4 <sup>3</sup> / <sub>8</sub>	1 <sup>1</sup> / <sub>4</sub>	0.490	300
2 1/2	2.875	8ga	6 <sup>3</sup> / <sub>8</sub>	3 <sup>1</sup> / <sub>8</sub>	1 <sup>5</sup> / <sub>8</sub>	5 <sup>3</sup> / <sub>8</sub>	1 <sup>3</sup> / <sub>4</sub>	0.910	400
3	3.500	8ga	7 <sup>1</sup> / <sub>8</sub>	3 <sup>3</sup> / <sub>4</sub>	1 <sup>15</sup> / <sub>16</sub>	6 <sup>1</sup> / <sub>8</sub>	1 <sup>3</sup> / <sub>4</sub>	0.950	400
3 1/2	4.000	8ga	7 <sup>3</sup> / <sub>8</sub>	4 <sup>5</sup> / <sub>16</sub>	2 <sup>3</sup> / <sub>16</sub>	6 <sup>3</sup> / <sub>8</sub>	1 <sup>3</sup> / <sub>4</sub>	1.050	400
4	4.500	8ga	7 <sup>3</sup> / <sub>4</sub>	4 <sup>13</sup> / <sub>16</sub>	2 <sup>7</sup> / <sub>16</sub>	6 <sup>3</sup> / <sub>4</sub>	1 <sup>3</sup> / <sub>4</sub>	1.160	400