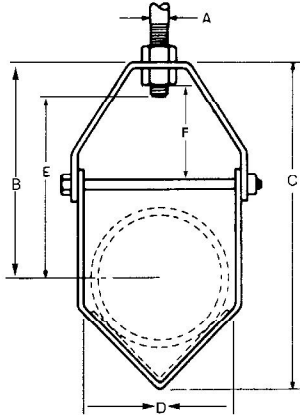


FIG. 11V
V BOTTOM CLEVIS HANGER



"E" dimension includes exposed rod threads beyond bottom of the hex nut. Exposed rod thread dimension is equal to the diameter of the rod used.

- Material:** Carbon steel.
Finish: Plain, electro-galvanized.
Service: Designed for the suspension of flexible plastic pipe lines. Used in conjunction with figure #12 channel.
Ordering: Specify size number and figure number.
Notes: Hanger and channel sold separately. Upper locknut must be tightened securely to assure proper hanger performance.

PIPE SIZE	SIZE NUMBER	MATERIAL SIZE		BOLT	A	B	C	D	E	F	WGT EACH (lbs)	MAX REC LOAD (lbs)
		TOP	BOTTOM									
1/2	1	14ga x 7/8	16ga x 7/8	1/4	3/8	5 ³ / ₁₆	5 ⁷ / ₈	2 ⁹ / ₁₆	4 ⁷ / ₁₆	1 ¹ / ₄	.30	150
3/4	1	14ga x 7/8	16ga x 7/8	1/4	3/8	5	5 ⁷ / ₈	2 ⁹ / ₁₆	4 ¹ / ₄	1 ¹ / ₄	.30	150
1	1	14ga x 7/8	16ga x 7/8	1/4	3/8	4 ⁷ / ₈	5 ⁷ / ₈	2 ⁹ / ₁₆	4 ¹ / ₁₆	1 ¹ / ₄	.30	150
1 1/4	1	14ga x 7/8	16ga x 7/8	1/4	3/8	4 ⁵ / ₈	5 ⁷ / ₈	2 ⁹ / ₁₆	3 ⁷ / ₈	1 ¹ / ₄	.30	150
1 1/2	1	14ga x 7/8	16ga x 7/8	1/4	3/8	4 ⁷ / ₁₆	5 ⁷ / ₈	2 ⁹ / ₁₆	3 ¹¹ / ₁₆	1 ¹ / ₄	.30	150
2	1	14ga x 7/8	16ga x 7/8	1/4	3/8	4 ¹ / ₈	5 ⁷ / ₈	2 ⁹ / ₁₆	3 ³ / ₈	1 ¹ / ₄	.30	150
2 1/2	2	11ga x 1 ³ / ₁₆	14ga x 1 ³ / ₁₆	3/8	1/2	6 ¹³ / ₁₆	8 ¹⁵ / ₁₆	4 ¹¹ / ₁₆	5 ³ / ₄	2 ³ / ₈	.96	250
3	2	11ga x 1 ³ / ₁₆	14ga x 1 ³ / ₁₆	3/8	1/2	6 ³ / ₈	8 ¹⁵ / ₁₆	4 ¹¹ / ₁₆	5 ⁵ / ₁₆	2 ³ / ₈	.96	250
4	2	11ga x 1 ³ / ₁₆	14ga x 1 ³ / ₁₆	3/8	1/2	5 ¹¹ / ₁₆	8 ¹⁵ / ₁₆	4 ¹¹ / ₁₆	4 ¹ / ₂	2 ³ / ₈	.96	250